

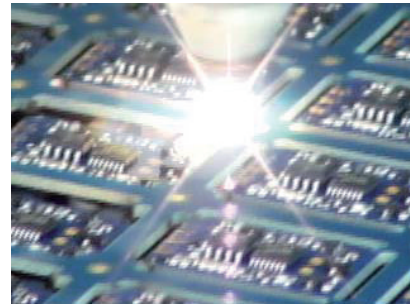
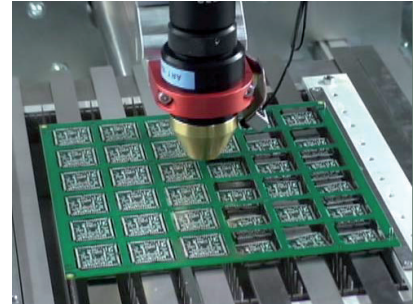
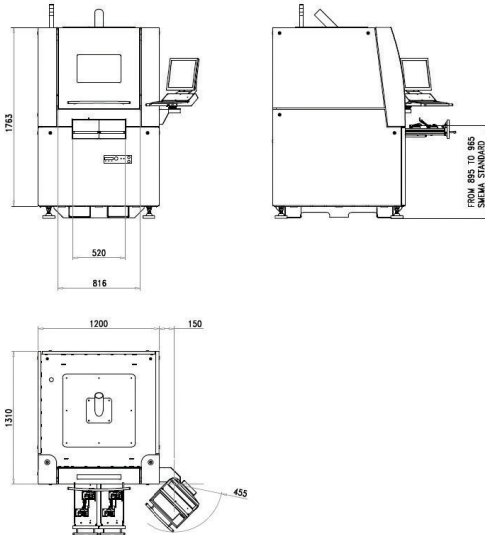
# neo routing 400

THE QUICKEST SOLUTION FOR DEPANELING

- CO2 laser system
- Working area 400x400 mm
- Cutting capability up to 3 mm
- Contactless cutting process
- Reduced time for PCBs detaching up to 90%
- Dust free process
- No mechanical stress
- Easy software programming
- Freely programmable profiling
- In line and off line configuration
- Mechanical/electrical SMEMA compatibility
- Motorized width adjustment



Distributed by:



#### TECH SPEC

Dimensions	<b>1200x1310x1800 mm (LxWxH)</b>
Weight	<b>1400 kg</b>
Total working area	<b>Up to 400x400 mm</b>
Transfer protocol	<b>SMEMA</b>

#### CUTTING UNIT

LASER	<b>Sealed laser CO2 70W</b>
Focusing	<b>ZnSn Optics</b>
Service Gas	<b>Nitrogen/Argon/Air</b>
Centering	<b>Optical with camera</b>

#### PANEL DIMENSIONS

Length	<b>up to 400 mm</b>
Width	<b>up to 400 mm</b>
Thickness	<b>up to 3 mm</b>

#### AXIS

Available axis	<b>3 axis with brushless motors</b>
Maximum acceleration	<b>1,6m/sec</b>
Maximum speed	<b>60m/min</b>
Positioning accuracy	<b>&gt; ± 50 µm (single axis)</b>
Repeatability	<b>&gt; 15 µm (single axis)</b>

#### CAMERA

**mobile for debugging**

